



www.pef.edu.pk



TABLE OF CONTENT

- 01 ● ABOUT UIES
(Key Projects, CRS, Team, Our Associates)
- 02 ● PEF BACKGROUND
- 03 ● PEF SCHOOLS
(Our Mission, Our Objectives)
- 04 ● KEY CHALLENGES
- 05 ● CHANGE & IMPACT
- 06 ● FUNDS HEADS
- 07 ● CONTAC US





WELCOME TO UIES

www.uniqueschool.edu.pk



“An educational system isn’t worth a great deal if it teaches young people how to make a living but doesn’t teach them how to make a life.” Unique School System is as unique as its name – situated in the heart of Lahore. The mission of its pioneers is to educate and train the students of today for an enlightened tomorrow so that they can act as the saviors posted on the boundary walls of their beloved land.

We emphasize the latest technology as computer science affects every aspect of our lives. It will continue to place increasing demands on education, business and industry so that the workforce of the future is equipped with the necessary skills to thrive in the digital age.

KEY PROJECTS

- » Unique Preschool
- » Unique School System
- » Unique College
- » UPD Institute
- » Unique Science Academy
- » YES for Education
- » Unique TV
- » PEF
- » Café Learning



CORPORATE SOCIAL RESPONSIBILITY

Corporate Social Responsibility (CSR) at UIES refers to the commitment and actions taken to contribute positively to society and the environment beyond its primary mission of education. Here are several aspects of CSR at UIES:

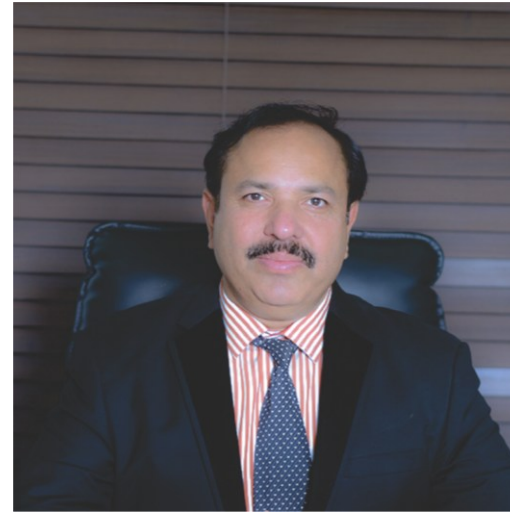
- » Community Engagement
- » Access to Education
- » Environmental Sustainability
- » Social Inclusion and Diversity
- » Philanthropy and Charitable Initiatives
- » Ethical Practices
- » Teacher and Staff Well-being
- » Global Citizenship Education
- » Research for Social Impact
- » Transparency and Accountability
- » Partnerships with NGOs and Government Bodies
- » Student Volunteering Programs
- » Promotion of Health and Well-being



OUR TEAM



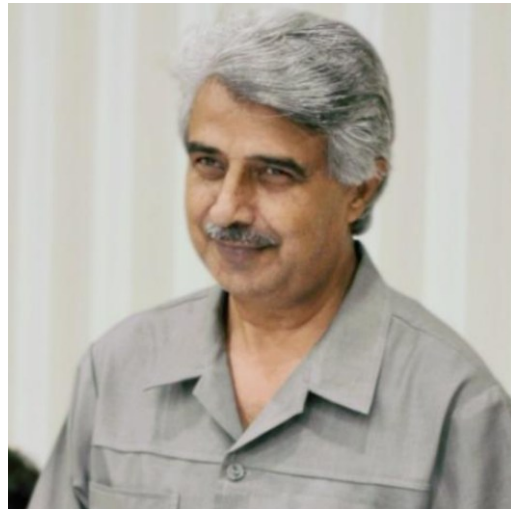
Syed Babar Rehan Zaidi
Chairman UIES



Ibrar Khan Niazi
CEO UIES



Prof. Iftikhar Ahmad Sheikh
Project Director, UIES



Khizar Hayat Gondal
Project Director PIEMA Schools



Miss Javeria Rana
Director Academics

EXECUTIVE BODY



Col. Jehanzaib Khan Niazi



Dr. Roshi Khalid



Dr. Sultan Mahmood



Abdul Rasheed Awan



Sana Ullah Sani



Mian Waqar ul Islam



Muhammad Tariq Sohail

OUR ASSOCIATES

- » Odysa, USA
- » Taleemi Baithak, Pakistan
- » EDAP, Pakistan
- » EcoCare Consultancy Services
- » BKOAP
- » Niazi Express Bus Service
- » Marvel System

Odysia Learning™

Taleemi Baithak
Eastern Educational
Products & Services

edap
WE MAKE YOU SMART

ECOCARE



BRICK KILNS OWNERS'
ASSOCIATION PAKISTAN
[BKOAP]
*Approved by Directorate General of Trade
Organization Ministry of Commerce Islamabad*

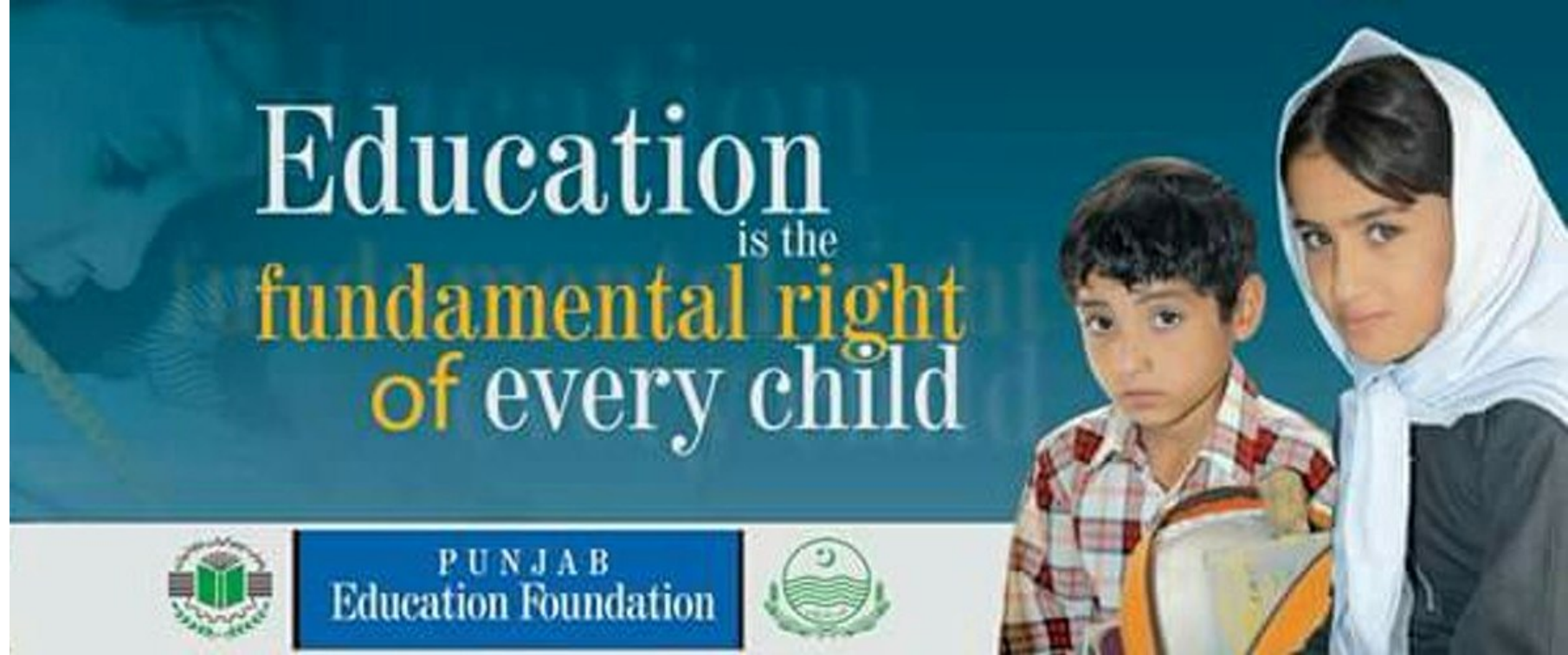
NiaziExpress

MARVEL SYSTEM





www.pef.edu.pk



PUNJAB EDUCATION FOUNDATION

The Education Foundation was established under the Punjab Education Foundation Act of 1991 as an autonomous statutory body to encourage and promote education on non-commercial/ non-profit basis. Since then, it has come a long way to arrange free quality education for the deserving children at their doorsteps. The Punjab Education Foundation has been restructured under the Punjab Education Foundation Act-XII of 2004 for the promotion of education, specially encouraging and supporting the efforts of the private sector in providing education to the poor, through public private partnership.



Background



www.pef.edu.pk



PEF SCHOOLS MANAGED BY UIES

UIES oversees and administers a network comprising 70+ schools spanning different regions, including 71 schools in Narowal, 1 school in Kasoor, and 1 school in Depalpur.

Across these 70+ schools, we cater to over 3000 students, engage 175+ teachers, and employ 75 support staff. Dedicated to delivering quality education, UIES harmoniously combines the efficiency of the private sector with the public sector's commitment to accessibility and inclusivity.



OUR MISSION

"At UIES, our mission is to empower communities through education. We strive to create a dynamic learning environment that fosters intellectual curiosity, critical thinking, and a passion for lifelong learning.

By managing a network of government schools, we aim to bridge gaps in educational access and deliver quality education to every child, nurturing them into responsible and empowered citizens."





KEY OBJECTIVES

- To invest in infrastructure development to modernize school facilities
- To recruit and retain high-quality teachers to enhance the teaching staff
- To provide teacher training and professional development opportunities
- To ensure the availability of textbooks and uniforms for students
- To provide and maintain necessary teaching materials for educators
- To Implement a student-centric approach to learning
- To provide support and counseling services for students
- To Introduce incentives to encourage regular attendance among students
- To actively involve the community in various school activities
- To implement regular monitoring and evaluation processes for school performance.
- To ensure efficient maintenance of facilities and resources



KEY CHALLENGES

Poor Infrastructure:

Many Schools were facing critical challenges related to infrastructure, including a shortage of classrooms, inadequacies in essential amenities such as classrooms, bathrooms, and laboratories, poorly maintained or non-existent playgrounds and boundary walls.

Insufficient Teacher Availability and Lack of Training

Many Schools were facing problems like insufficient teachers availability and a lack of training programs.

Absence of Educational Resources:

Many Schools were facing shortage of textbooks, insufficient teaching aids and limited access to educational materials.

Lack of collaboration and Community Engagement:

There was a lack of active involvement and collaboration between the school and the local community.

Insufficient operational maintenance:

There was a lack of regular and effective upkeep of school facilities, equipment and resources.





Mandi Bahao Din
(DISTRICT)
Mandi Bahao Din
(TEHSIL)

CONDITION OF SCHOOLS



GGPS CHAK 14

Mandi Bahao Din



PERFROMANCE REPORT OF PSRP SCHOOL (ORGANIZATIONS)

School Code	34620260		School Name	GGPS CHAK 14		District	MB DIN			GIS Coordinates	lat32.5302777long73.3947222			
School Address	GGPS CHAK 14					Organization Name	UNIQUE INTERNAIONAL EDUCATIONAL SERVICES PVT.LTD							
MINIMUM	12000					MAXIMUM salary	14000							
Availability of PEF Board as per Format (Yes/No)	YES	No of Functional Toilet	4		Non functional Toilets	0			Student Toilet ratio	1:56				
Construction of new Toilets by licensee	NO	Availability of Electricity in School(Yes/No)	YES		Total Classrooms	3			Constructions of new class room by licensee (number)	NO				
Color coding as per PEF partners Guidelines (Yes/No)	YES	Paint work (Done/Not Done)	YES		Boundary wall Available (Yes/No)	YES			Boundary wall Constructed/repaired	NO				
Water Points available in school (Number)	4		Water Point ratio	1:56		Furniture for all studnets Available (Yes/No)	YES			Writing Board available in each class room (Yes/NO)	YES			
Mode of Transfer of Teachers' salary (digital/Cash)	DIGITAL		Salaries paid upto Month,2025	Feb-25		Appointment of Peon/Ayya (Yes/No)	YES			Ceiling fans available in each classroom(Yes/NO)	YES			
Provision of Fitst Aid Kit	YES		Any other infrastrucure Development	NO		Repair roof/replace (Yes/No)	NO			Plantation performed (Yes/No)	In progress			
Teachers Qualification	Matric		Intermediate		Bachelor		Masters		Mphil		Total Teachers	Student Teacer Ratio		
Breakup	2		2		4		2		0		10	1;23		
Class wise Enrollment	N	P	One	Two	Three	Four	Five	Six	Seven	Eight	Nine	Ten	Total	Enrollment at the time of School handed over
	26	29	34	26	24	28	14	13	15	15			224	157



GGPS CHAK 14 Mandi Bahao Din

AFTER



GOVT
GIRLS PRIMARY SCHOOL
EMIS CODE 34620260 CHAK No 14







GPS DERA TOPIA

Mandi Bahao Din



PERFORMANCE REPORT OF PSRP SCHOOL (ORGANIZATIONS)

School Code	34620093		School Name	GPS DERA TOPIA			District	MB DIN			GIS Coordinates	lat32.6519444long73.6094444			
School Address	GPS DERA TOPIA						Organization Name	UNIQUE INTERNAIONAL EDUCATIONAL SERVICES PVT.LTD							
MINIMUM	12000		MAXIMUM SALARY	14000											
Availability of PEF Board as per Format (Yes/No)	YES		No of Functional Toilet	2		No of non functional toilets	0		Student Toilet ratio	1:21					
Construction of new Toilets by licensee	NO		Availability of Electricity in School(Yes/No)	YES		Total Classrooms	3		Constructions of new class room by licensee (number)	NO					
Color coding as per PEF partners Guidelines (Yes/No)	YES		Paint work (Done/Not Done)	YES		Boundary wall Available (Yes/No)	YES		Boundary wall Constructed/repaired	NO					
Water Points available in school (Number)	1		Water Point ratio	1:42		Furniture for all studnets Available (Yes/No)	YES		Writing Board available in each class room (Yes/NO)	YES					
Mode of Transfer of Teachers' salary (digital/Cash)	DIGITAL		Salaries paid upto Month,2025	Feb-25		Appointment of Peon/Ayya (Yes/No)	YES		Ceiling fans available in each classroom(Yes/NO)	YES					
Provision of Fitst Aid Kit	YES		Any other infrastrucure Development	NO		Repair roof/replace (Yes/No)	NO		Plantation performed (Yes/No)	In progress					
Teachers Qualification Breakup	Matric		Intermediate		Bachelor		Masters		Mphil		Total Teachers	Student Teacer Ratio			
					2						2	1:21			
	N	P	One	Two	Three	Four	Five	Six	Seven	Eight	Nine	Ten	Total	Enrollment at the time of School handed over	
Class wise Enrollment	17		13	4	3	3	2						42	32	



GPS DERA TOPIA Mandi Bahao Din

AFTER





GGPS DERA SALHON

Mandi Bahao Din



PERFROMANCE REPORT OF PSRP SCHOOL (ORGANIZATIONS)

School Code	34620405		School Name	GGPS DERA SALHON			District	MB DIN			GIS Coordinates	lat32.5708333long73.66555			
School Address	GGPS DERA SALHON						Organization Name	UNIQUE INTERNAIONAL EDUCATIONAL SERVICES PVT.LTD							
MINIMUM	12000						MAXIMUM SALARY	14000							
Availability of PEF Board as per Format (Yes/No)	YES		No of Functional Toilet	2			No of non functional toilets	0			Student Toilet ratio	1:09			
Construction of new Toilets by licensee	NO		Availability of Electricity in School(Yes/No)	YES			Total Classrooms	2			Constructions of new class room by licensee (number)	NO			
Color coding as per PEF partners Guidelines (Yes/No)	YES		Paint work (Done/Not Done)	YES			Boundary wall Available (Yes/No)	YES			Boundary wall Constructed/repaired	NO			
Water Points available in school (Number)	1		Water Point ratio	1:18			Furniture for all studnets Available (Yes/No)	YES			Writing Board available in each class room (Yes/NO)	YES			
Mode of Transfer of Teachers' salary (digital/Cash)	DIGITAL		Salaries paid upto Month,2025	Feb-25			Appointment of Peon/Ayya (Yes/No)	YES			Ceiling fans available in each classroom(Yes/NO)	YES			
Provision of Fitst Aid Kit	YES		Any other infrastrucre Development	NO			Repair roof/replace (Yes/No)	NO			Plantation performed (Yes/No)	In progress			
Teachers Qualification	Matric		Intermediate	Bachelor			Masters	Mphil			Total Teachers	Student Teacer Ratio			
Breakup	0		0	1			1	0			2	1:09			
	N	P	One	Two	Three	Four	Five	Six	Seven	Eight	Nine	Ten	Total	Enrollment at the time of School handed over	
Class wise Enrollment	5	1	4	2	3	0	2	1					18	19	



GGPS DERA SALHON Mandi Bahao Din

AFTER



پنجاب ایجوکیشن فاؤنڈیشن
(حکومت پنجاب)

گورنمنٹ پرائمری سکول
ڈیرہ صالحوں
34620405

سکول ہذا کو PEF-PSRP کی مالی معاونت حاصل ہے۔ فاؤنڈیشن اس ادارہ میں زیر تعلیم تمام طلباء و طالبات کیلئے معیاری تعلیم مفت فراہم کر رہی ہے۔ لہذا اسکول انتظامیہ کسی بھی مد میں کوئی رقم یا فیس وصول نہیں کر سکتی۔

پتہ: پنجاب ایجوکیشن فاؤنڈیشن 152 ایل بلاک، گلبرگ۔ III لاہور برائے شکایات: 042-99230127, 042-99230113



GPS BHADRIAN- WALI

Mandi Bahao Din



PERFORMANCE REPORT OF PSRP SCHOOL (ORGANIZATIONS)

School Code	34620095		School Name	GPS BHADRIAN- WALI			District	MB DIN			GIS Coordinates	lat32.564166666666long73.553333		
School Address	GPS BHADRIAN- WALI						Organization Name	UNIQUE INTERNAIONAL EDUCATIONAL SERVICES PVT.LTD						
MINIMUM	12000						MAXIMUM SALARY	14000						
Availability of PEF Board as per Format (Yes/No)	YES	No of Functional Toilet	2	NO OF NON FUNCTIONAL TOILET	0	Student Toilet ratio	1:29							
Construction of new Toilets by licensee	NO	Availability of Electricity in School(Yes/No)	YES	Total Classrooms	2	Constructions of new class room by licensee (number)	NO							
Color coding as per PEF partners Guidelines (Yes/No)	YES	Paint work (Done/Not Done)	YES	Boundary wall Available (Yes/No)	YES	Boundary wall Constructed/repared	NO							
Water Points available in school (Number)	1	Water Point ratio	1:58	Furniture for all studnets Available (Yes/No)	YES	Writing Board available in each class room (Yes/NO)	YES							
Mode of Transfer of Teachers' salary (digital/Cash)	DIGITAL		Salaries paid upto Month,2025	Feb-25	Appointment of Peon/Ayya (Yes/No)	YES	Ceiling fans available in each classroom(Yes/NO)	YES						
Provision of Fitst Aid Kit	YES		Any other infrastrucure Development	NO	Repair roof/replace (Yes/No)	NO	Plantation performed (Yes/No)	In progress						
Teachers Qualification	Matric		Intermediate		Bachelor		Masters		Mphil		Total Teachers	Student Teacher Ratio		
Breakup					2						2	1;29		
	N	P	One	Two	Three	Four	Five	Six	Seven	Eight	Nine	Ten	Total	Enrollment at the time of School handed over
Class wise Enrollment	20	6	5	9	8	4	6						58	53



GPS BHADRIAN- WALI Mandi Bahao Din

AFTER









GGPS DERA MIAN M ASLAM

Mandi Bahao Din



PERFROMANCE REPORT OF PSRP SCHOOL (ORGANIZATIONS)

School Code	34620218	School Name	GGPS DERA MIAN M ASLAM	District	MB DIN	GIS Coordinates	lat;32.533333 long;73.6258333333							
School Address	GGPS DERA MIAN M ASLAM			Organization Name	UNIQUE INTERNAIONAL EDUCATIONAL SERVICES PVT.LTD									
MINIMUM	12000			MAXIMUM SALARY	15000									
Availability of PEF Board as per Format (Yes/No)	YES	No of Functional Toilet	2	NO OF NON FUNCTIONAL TOILET	0	Student Toilet ratio	1:70							
Construction of new Toilets by licensee	NO	Availability of Electricity in School(Yes/No)	YES	Total Classrooms	2	Constructions of new class room by licensee (number)	NO							
Color coding as per PEF partners Guidelines (Yes/No)	YES	Paint work (Done/Not Done)	YES	Boundary wall Available (Yes/No)	YES	Boundary wall Constructed/repaired	NO							
Water Points available in school (Number)	1	Water Point ratio	1:70	Furniture for all studnets Available (Yes/No)	YES	Writing Board available in each class room (Yes/NO)	YES							
Mode of Transfer of Teachers' salary (digital/Cash)	DIGITAL	Salaries paid upto Month,2025	Feb-25	Appointment of Peon/Ayya (Yes/No)	YES	Ceiling fans available in each classroom(Yes/NO)	YES							
Provision of Fitst Aid Kit	YES	Any other infrastrucure Development	NO	Repair roof/replace (Yes/No)	NO	Plantation performed (Yes/No)	YES							
Teachers Qualification	Matric	Intermediate	Bachelor	Masters	Mphil	Total Teachers	Student Teacher Ratio							
Breakup			1	1		2	1;34							
	N	P	One	Two	Three	Four	Five	Six	Seven	Eight	Nine	Ten	Total	Enrollment at the time of School handed over
Class wise Enrollment	29		9	7	12	6	4						67	42



GGPS DERA MIAN M ASLAM Mandi Bahao Din

AFTER









GPS DERA CHAUDRY SARDAR KHAN Mandi Bahao Din

AFTER







GPS DERA ALI AHMED

Mandi Bahao Din



PERFORMANCE REPORT OF PSRP SCHOOL (ORGANIZATIONS)

School Code	34620330	School Name	GPS DERA ALI AHMED	District	MB DIN	GIS Coordinates	lat32.530555long73.5027777							
School Address	GPS DERA ALI AHMED			Organization Name	UNIQUE INTERNAIONAL EDUCATIONAL SERVICES PVT.LTD									
14000	12000			MAXIMUM SALARY	14000									
Availability of PEF Board as per Format (Yes/No)	YES	No of Functional Toilet	2	NO OF NON FUNCTIONAL TOILET	0	Student Toilet ratio	1:19							
Construction of new Toilets by licensee	NO	Availability of Electricity in School(Yes/No)	YES	Total Classrooms	3	Constructions of new class room by licensee (number)	NO							
Color coding as per PEF partners Guidelines (Yes/No)	YES	Paint work (Done/Not Done)	YES	Boundary wall Available (Yes/No)	YES	Boundary wall Constructed/repaired	NO							
Water Points available in school (Number)	1	Water Point ratio	1:38	Furniture for all studnets Available (Yes/No)	YES	Writing Board available in each class room (Yes/NO)	YES							
Mode of Transfer of Teachers' salary (digital/Cash)	DIGITAL	Salaries paid upto Month,2025	Feb-25	Appointment of Peon/Ayya (Yes/No)	YES	Ceiling fans available in each classroom(Yes/NO)	YES							
Provision of Fitst Aid Kit	YES	Any other infrastrucure Development	NO	Repair roof/replace (Yes/No)	NO	Plantation performed (Yes/No)	In progress							
Teachers Qualification	Matric	Intermediate	Bachelor	Masters	Mphil	Total Teachers	Student Teacer Ratio							
Breakup			2			2	1:19							
	N	P	One	Two	Three	Four	Five	Six	Seven	Eight	Nine	Ten	Total	Enrollment at the time of School handed over
Class wise Enrollment	16		4	5	4	4	2	2	1				38	46



GPS DERA ALI AHMED

Mandi Bahao Din

AFTER









GPS DERA M BOOTA

Mandi Bahao Din



PERFROMANCE REPORT OF PSRP SCHOOL (ORGANIZATIONS)

School Code	34620356		School Name	GPS DERA M BOOTA				District	MB DIN			GIS Coordinates		
School Address	GPS DERA M BOOTA				Organization Name	UNIQUE INTERNAIONAL EDUCATIONAL SERVICES PVT.LTD								
MINIMUM	12000				MAXIMUM SALARY	14000								
Availability of PEF Board as per Format (Yes/No)	YES	No of Functional Toilet	2	NO OF NON FUNCTIONAL TOILET	0	Student Toilet ratio	1:46							
Construction of new Toilets by licensee	NO	Availability of Electricity in School(Yes/No)	YES	Total Classrooms	3	Constructions of new class room by licensee (number)	NO							
Color coding as per PEF partners Guidelines (Yes/No)	YES	Paint work (Done/Not Done)	YES	Boundary wall Available (Yes/No)	YES	Boundary wall Constructed/repaired	NO							
Water Points available in school (Number)	2	Water Point ratio	46	Furniture for all studnets Available (Yes/No)	YES	Writing Board available in each class room (Yes/NO)	YES							
Mode of Transfer of Teachers' salary (digital/Cash)	DIGITAL		Salaries paid upto Month,2025	Feb-25	Appointment of Peon/Ayya (Yes/No)	YES	Ceiling fans available in each classroom(Yes/NO)	YES						
Provision of Fitst Aid Kit	YES	Any other infrastrucre Development	NO	Repair roof/replace (Yes/No)	NO	Plantation performed (Yes/No)	In progress							
Teachers Qualification	Matric		Intermediate	Bachelor		Masters	Mphil		Total Teachers	Student Teacer Ratio				
Breakup			1	2				3		1:31				
	N	P	One	Two	Three	Four	Five	Six	Seven	Eight	Nine	Ten	Total	Enrollment at the time of School handed over
Class wise Enrollment	35		18	10	5	12	5	6			91		40	



GPS DERA M BOOTA Mandi Bahao Din

AFTER



Attendance Register For the month of March 2015

Date	Principal			Teacher			Trainee		
	Att.	Slp.	Dep.	Att.	Slp.	Dep.	Att.	Slp.	Dep.
1									
2									
3									
4									
5									
6									
7									
8									
9									
10									
11									
12									
13									
14									
15									
16									
17									
18									
19									
20									
21									
22									
23									
24									
25									
26									
27									
28									
29									
30									
31									
Sick									
Casual									
Pt.									
Total									

Head of Department

پنجاب ایجوکیشن فاؤنڈیشن

پنجاب ایجوکیشن فاؤنڈیشن
(حکومت پنجاب)

گورنمنٹ پرائمری سکول
ڈیرہ محمد پوٹا
34620356

سکول ہذا کو PEF-PSRP کی مالی معاونت حاصل ہے۔ فاؤنڈیشن اس ادارہ میں زیر تعلیم تمام طلباء و طالبات کیلئے معیاری تعلیم مفت فراہم کر رہی ہے۔ لہذا اسکول انتظامیہ کسی بھی مد میں کوئی رقم یا فیس وصول نہیں کر سکتی۔

پتہ: پنجاب ایجوکیشن فاؤنڈیشن 152 ایل بلاک، گلبرگ۔ لاہور برائے شکایات: 042-99230127, 042-99230113
www.pef.edu.pk ویب سائٹ
برائے رابطہ: 042-99232791-8

ٹیپرا نمبر ۱ سکول





GGPS DERA FAZAL DAD GUJJAR

Mandi Bahao Din



PERFORMANCE REPORT OF PSRP SCHOOL (ORGANIZATIONS)

School Code	34620243		School Name	GGPS DERA FAZAL DAD GUJJAR				District	MB DIN		GIS Coordinates	lat32.598888long73.56916666		
School Address	GGPS DERA FAZAL DAD GUJJAR				Organization Name	UNIQUE INTERNAIONAL EDUCATIONAL SERVICES PVT.LTD								
MINIMUM	12000				MAXIMUM SALARY	14000								
Availability of PEF Board as per Format (Yes/No)	YES		No of Functional Toilet	2		NO OF NON FUNCTIONAL TOILET	0		Student Toilet ratio	1:09				
Construction of new Toilets by licensee	NO		Availability of Electricity in School(Yes/No)	YES		Total Classrooms	2		Constructions of new class room by licensee (number)	NO				
Color coding as per PEF partners Guidelines (Yes/No)	YES		Paint work (Done/Not Done)	YES		Boundary wall Available (Yes/No)	YES		Boundary wall Constructed/repaired	NO				
Water Points available in school (Number)	1		Water Point ratio	1:17		Furniture for all studnets Available (Yes/No)	YES		Writing Board available in each class room (Yes/NO)	YES				
Mode of Transfer of Teachers' salary (digital/Cash)	DIGITAL		Salaries paid upto Month,2025	Feb-25		Appointment of Peon/Ayya (Yes/No)	YES		Ceiling fans available in each classroom(Yes/NO)	YES				
Provision of Fitst Aid Kit	YES		Any other infrastrucre Development	NO		Repair roof/replace (Yes/No)	NO		Plantation performed (Yes/No)	In progress				
Teachers Qualification	Matric		Intermediate	Bachelor		Masters	Mphil		Total Teachers	Student Teacer Ratio				
Breakup				2					2	1:09				
	N	P	One	Two	Three	Four	Five	Six	Seven	Eight	Nine	Ten	Total	Enrollment at the time of School handed over
Class wise Enrollment	7		4	2		2	2						17	19



GGPS DERA FAZAL DAD GUJJAR Mandi Bahao Din

AFTER







GGPS RAKH BALOCH KHURD

Mandi Bahao Din

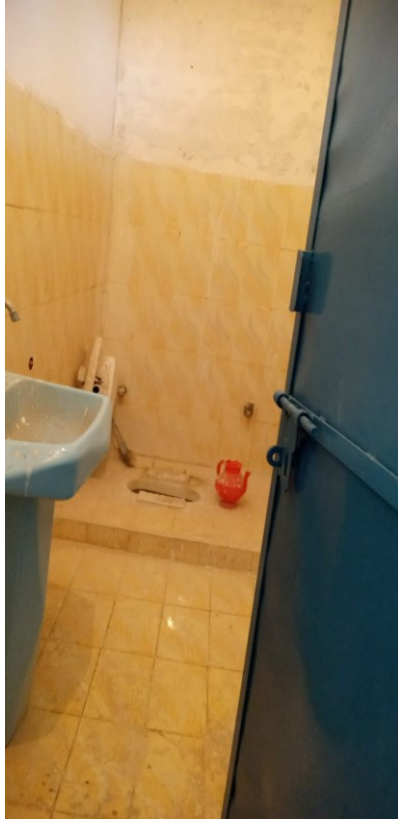


PERFORMANCE REPORT OF PSRP SCHOOL (ORGANIZATIONS)														
School Code	34620416		School Name	GGPS RAKH BALOCH KHURD			District	MB DIN			GIS Coordinates	lat32.55722222long73.610555		
School Address	GGPS RAKH BALOCH KHURD						Organization Name	UNIQUE INTERNAIONAL EDUCATIONAL SERVICES PVT.LTD						
MINIMUM	12000						MAXIMUM SALARY	14000						
Availability of PEF Board as per Format (Yes/No)	YES	No of Functional Toilet			3	NO OF NON FUNCTIONAL TOILET	0	Student Toilet ratio			1:22			
Construction of new Toilets by licensee	NO	Availability of Electricity in School(Yes/No)			YES	Total Classrooms	4	Constructions of new class room by licensee (number)			NO			
Color coding as per PEF partners Guidelines (Yes/No)	YES	Paint work (Done/Not Done)			YES	Boundary wall Available (Yes/No)	YES	Boundary wall Constructed/repaired			NO			
Water Points available in school (Number)	1	Water Point ratio			1:70	Furniture for all studnets Available (Yes/No)	YES	Writing Board available in each class room (Yes/NO)			YES			
Mode of Transfer of Teachers' salary (digital/Cash)	DIGITAL		Salaries paid upto Month,2025			Feb-25	Appointment of Peon/Ayya (Yes/No)	YES	Ceiling fans available in each classroom(Yes/NO)			YES		
Provision of Fitst Aid Kit	YES		Any other infrastrucure Development			NO	Repair roof/replace (Yes/No)	NO			Plantation performed (Yes/No) In progress			
Teachers Qualification Breakup	Matric		Intermediate		Bachelor		Masters		Mphil		Total Teachers	Student Teacer Ratio		
					2						2	1;33		
Class wise Enrollment	N	P	One	Two	Three	Four	Five	Six	Seven	Eight	Nine	Total	Enrollment at the time of School handed over	
	8	8	5	6	10	11	10	7				65	48	



GGPS RAKH BALOCH KHURD Mandi Bahao Din

AFTER



گورنمنٹ گلرز پرائمری سکول (ریگولر بوائز ٹیچر) ایف اے ایف کوڈ
34620416

درخت اور پودوں کا صدقہ ہے

صاف سبز پاکستان







GPS DERA REHMAT KHAN

Mandi Bahao Din



PERFORMANCE REPORT OF PSRP SCHOOL (ORGANIZATIONS)

School Code	34620130		School Name	GPS DERA REHMAT KHAN			District	MB DIN			GIS Coordinates	lat32.497222long73.4313888		
School Address	GPS DERA REHMAT KHAN						Organization Name	UNIQUE INTERNAIONAL EDUCATIONAL SERVICES PVT.LTD						
MINIMUM	12000						MAXIMUM SALARY	15000						
Availability of PEF Board as per Format (Yes/No)	YES		No of Functional Toilet	2			NO OF NON FUNCTIONAL TOILET	0			Student Toilet ratio	1:36		
Construction of new Toilets by licensee	NO		Availability of Electricity in School(Yes/No)	YES			Total Classrooms	3			Constructions of new class room by licensee (number)	NO		
Color coding as per PEF partners Guidelines (Yes/No)	YES		Paint work (Done/Not Done)	YES			Boundary wall Available (Yes/No)	YES			Boundary wall Constructed/repaired	NO		
Water Points available in school (Number)	2		Water Point ratio	1:36			Furniture for all studnets Available (Yes/No)	YES			Writing Board available in each class room (Yes/NO)	YES		
Mode of Transfer of Teachers' salary (digital/Cash)	DIGITAL		Salaries paid upto Month,2025	Feb-25			Appointment of Peon/Ayya (Yes/No)	YES			Ceiling fans available in each classroom(Yes/NO)	YES		
Provision of Fitst Aid Kit	YES		Any other infrastrucure Development	NO			Repair roof/replace (Yes/No)	NO			Plantation performed (Yes/No)	In progress		
Teachers Qualification	Matric		Intermediate	Bachelor			Masters	Mphil			Total Teachers	Student Teacer Ratio		
Breakup			1	2							3	1:24		
	N	P	One	Two	Three	Four	Five	Six	Seven	Eight	Nine	Ten	Total	Enrollment at the time of School handed over
Class wise Enrollment	7	21	14	7	9	8	6						72	50



GPS DERA REHMAT KHAN

Mandi Bahao Din

AFTER





پنجاب ایجوکیشن فاؤنڈیشن (حکومت پنجاب)



گورنمنٹ پرائمری سکول ڈیرہ رحمت خاں 34620130

سکول ہذا کو PEF-PSRP کی مالی معاونت حاصل ہے۔ فاؤنڈیشن اس ادارہ میں زیر تعلیم تمام طلباء و طالبات کیلئے معیاری تعلیم مفت فراہم کر رہی ہے۔ لہذا سکول انتظامیہ کسی بھی مد میں کوئی رقم یا فیس وصول نہیں کر سکتی۔

پتہ: پنجاب ایجوکیشن فاؤنڈیشن 52 ایل بلاک، گلبرگ۔ III لاہور برائے شکایات: 042-99230127, 042-99230113

ویب سائٹ: www.pef.edu.pk

برائے رابطہ: 042-99232791-8

گورنمنٹ

سکول ہذا

ادارہ میں

ہے۔ لہذا

پتہ: پنجاب

برائے رابطہ:

پتہ:

برائے رابطہ





GPS KAKOWAL

Mandi Bahao Din



PERFORMANCE REPORT OF PSRP SCHOOL (ORGANIZATIONS)																			
School Code	34620128		School Name	GPS KAKOWAL			District	MB DIN			GIS Coordinates								
School Address	GPS KAKOWAL			Organization Name	UNIQUE INTERNAIONAL EDUCATIONAL SERVICES PVT.LTD														
MINIMUM	12000			MAXIMUM SALARY	14000														
Availability of PEF Board as per Format (Yes/No)	YES	No of Functional Toilet		2	NO OF NON FUNCTIONAL TOILET			0	Student Toilet ratio			1:19							
Construction of new Toilets by licensee	NO	Availability of Electricity in School(Yes/No)		YES	Total Classrooms			5	Constructions of new class room by licensee (number)			NO							
Color coding as per PEF partners Guidelines (Yes/No)	YES	Paint work (Done/Not Done)		YES	Boundary wall Available (Yes/No)			YES	Boundary wall Constructed/repaired			NO							
Water Points available in school (Number)	1	Water Point ratio		1:38	Furniture for all studnets Available (Yes/No)			YES	Writing Board available in each class room (Yes/NO)			YES							
Mode of Transfer of Teachers' salary (digital/Cash)	DIGITAL		Salaries paid upto Month,2025		Feb-25			Appointment of Peon/Ayya (Yes/No)			YES			Ceiling fans available in each classroom(Yes/NO)			YES		
Provision of Fitst Aid Kit	YES		Any other infrastrucre Development		NO			Repair roof/replace (Yes/No)			NO			Plantation performed (Yes/No)			In progress		
Teachers Qualification	Matric		Intermediate		Bachelor			Masters			Mphil		Total Teachers		Student Teacer Ratio				
Breakup			2								2		1;19						
	N	P	One	Two	Three	Four	Five	Six	Seven	Eight	Nine	Ten	Total	Enrollment at the time of School handed over					
Class wise Enrollment	23		6	5	2	2							38	20					



GPS KAKOWAL

Mandi Bahao Din

AFTER





گورنمنٹ گرلز کمیشن ماڈل سکول کاکھوال



تعمیر و ترقی کے لیے
گورنمنٹ گرلز کمیشن
ماڈل سکول کاکھوال

گورنمنٹ گرلز کمیونٹی ماڈل سکول کاکھوال



گورنمنٹ گرلز کمیشن
ماڈل سکول کاکھوال

گورنمنٹ گرلز کمیشن
ماڈل سکول کاکھوال

گورنمنٹ گرلز کمیشن
ماڈل سکول کاکھوال

گورنمنٹ گرلز کمیشن
ماڈل سکول کاکھوال

گورنمنٹ گرلز کمیشن
ماڈل سکول کاکھوال





GGPS DERA SALAM KADHAR Mandi Bahao Din

AFTER









GGPS CHAK- 15 JANUBI

Mandi Bahao Din



PERFROMANCE REPORT OF PSRP SCHOOL (ORGANIZATIONS)														
School Code	34620282		School Name	GGPS CHAK- 15 JANUBI			District	MB DIN		GIS Coordinates	lat32.4797222long73.3252777			
School Address	GGPS CHAK- 15 JANUBI			Organization Name	UNIQUE INTERNAIONAL EDUCATIONAL SERVICES PVT.LTD									
MINIMUM	12000			MAXIMUM SALARY	15000									
Availability of PEF Board as per Format (Yes/No)	YES		No of Functional Toilet	2		NO OF NON FUNCTIONAL TOILET	0		Student Toilet ratio	1:34				
Construction of new Toilets by licensee	NO		Availability of Electricity in School(Yes/No)	YES		Total Classrooms	2		Constructions of new class room by licensee (number)	NO				
Color coding as per PEF partners Guidelines (Yes/No)	YES		Paint work (Done/Not Done)	YES		Boundary wall Available (Yes/No)	YES		Boundary wall Constructed/repaired	NO				
Water Points available in school (Number)	1		Water Point ratio	1:67		Furniture for all studnets Available (Yes/No)	YES		Writing Board available in each class room (Yes/NO)	YES				
Mode of Transfer of Teachers' salary (digital/Cash)	DIGITAL		Salaries paid upto Month,2025	Feb-25		Appointment of Peon/Ayya (Yes/No)	YES		Ceiling fans available in each classroom(Yes/NO)	YES				
Provision of Fitst Aid Kit	YES		Any other infrastrucure Development	NO		Repair roof/replace (Yes/No)	NO		Plantation performed (Yes/No)	In progress				
Teachers Qualification	Matric		Intermediate	Bachelor		Masters	Mphil		Total Teachers	Student Teacer Ratio				
Breakup				2					2	1:34				
	N	P	One	Two	Three	Four	Five	Six	Seven	Eight	Nine	Ten	Total	Enrollment at the time of School handed over
Class wise Enrollment	25		12	5	7	6	9		2	1			67	53



GGPS CHAK- 15 JANUBI Mandi Bahao Din

AFTER



Attendance Register For the month of February 2015

Date	Teacher				Asha			
	Arr	Sig	Dep	Sig	Arr	Sig	Dep	Sig
1								
2	Sunday			Sunday				
3								
4								
5								
6								
7								
8								
9	Sunday			Sunday				
10								
11								
12								
13								
14								
15								
16	Sunday			Sunday				
17								
18								
19								
20								
21								
22								
23	Sunday			Sunday				
24								
25								
26								
27	Leave							
28								
29								
30								
31								

Sick
Casual

پنجاب ایجوکیشن فاؤنڈیشن
(حکومت پنجاب)

گورنمنٹ گرلز پرائمری سکول چک نمبر 15 جنوبی
34620282

سکول ہذا کو PEF-PSRP کی مالی معاونت حاصل ہے۔ فاؤنڈیشن اس ادارہ میں زیر تعلیم تمام طلباء و طالبات کیلئے معیاری تعلیم مفت فراہم کر رہی ہے۔ لہذا سکول انتظامیہ کسی بھی مد میں کوئی رقم یا فیس وصول نہیں کر سکتی۔

پتہ: پنجاب ایجوکیشن فاؤنڈیشن 152 ایل بلاک، گلبرگ-III لاہور برائے شکایات: 042-99230127, 042-99230113
برائے رابطہ: 042-99232791-8 ویب سائٹ: www.pef.edu.pk







GGPS NAWAN LOKE

Mandi Bahao Din



PERFORMANCE REPORT OF PSRP SCHOOL (ORGANIZATIONS)															
School Code	34620278		School Name	GGPS NAWAN LOKE				District	MB DIN		GIS Coordinates				
School Address	GGPS NAWAN LOKE				Organization Name	UNIQUE INTERNAIONAL EDUCATIONAL SERVICES PVT.LTD									
MINIMUM	12000				MAXIMUM SALARY	14000									
Availability of PEF Board as per Format (Yes/No)	YES		No of Functional Toilet	3		NO OF NON FUNCTIONAL TOILET	1		Student Toilet ratio	1:25					
Construction of new Toilets by licensee	NO		Availability of Electricity in School(Yes/No)	YES		Total Classrooms	2		Constructions of new class room by licensee (number)	NO					
Color coding as per PEF partners Guidelines (Yes/No)	YES		Paint work (Done/Not Done)	YES		Boundary wall Available (Yes/No)	YES		Boundary wall Constructed/repaired	NO					
Water Points available in school (Number)	2		Water Point ratio	1:37		Furniture for all studnets Available (Yes/No)	YES		Writing Board available in each class room (Yes/NO)	YES					
Mode of Transfer of Teachers' salary (digital/Cash)	DIGITAL		Salaries paid upto Month,2025	Feb-25		Appointment of Peon/Ayya (Yes/No)	YES		Ceiling fans available in each classroom(Yes/NO)	YES					
Provision of Fitst Aid Kit	YES		Any other infrastrucre Development	NO		Repair roof/replace (Yes/No)	NO		Plantation performed (Yes/No)	In progress					
Teachers Qualification	Matric		Intermediate	Bachelor		Masters	Mphil		Total Teachers	3					
Breakup				2			1			3					
	N	P	One	Two	Three	Four	Five	Six	Seven	Eight	Nine	Ten	Total	Enrollment at the time of School handed over	
Class wise Enrollment	26		13		10		10		9		6		74		90



GGPS NAWAN LOKE

Mandi Bahao Din

AFTER



Phone: 39620078

گورنمنٹ گرلز پرائمری سکول نواں لوک چھمبول

بِسْمِ اللّٰهِ الرَّحْمٰنِ الرَّحِیْمِ







GGPS BHUK

Mandi Bahao Din



PERFORMANCE REPORT OF PSRP SCHOOL (ORGANIZATIONS)

School Code	34620348	School Name	GGPS BHUK	District	MB DIN	GIS Coordinates	lat32.351052long73.443987							
School Address	GGPS BHUK			Organization Name	UNIQUE INTERNAIONAL EDUCATIONAL SERVICES PVT.LTD									
MINIMUM	12000			MAXIMUM SALARY	14000									
Availability of PEF Board as per Format (Yes/No)	YES	No of Functional Toilet	1	NO OF NON FUNCTIONAL TOILET	1	Student Toilet ratio	1:44							
Construction of new Toilets by licensee	NO	Availability of Electricity in School(Yes/No)	YES	Total Classrooms	2	Constructions of new class room by licensee (number)	NO							
Color coding as per PEF partners Guidelines (Yes/No)	YES	Paint work (Done/Not Done)	YES	Boundary wall Available (Yes/No)	YES	Boundary wall Constructed/repaired	NO							
Water Points available in school (Number)	1	Water Point ratio	1:44	Furniture for all studnets Available (Yes/No)	YES	Writing Board available in each class room (Yes/NO)	YES							
Mode of Transfer of Teachers' salary (digital/Cash)	DIGITAL	Salaries paid upto Month,2025	Feb-25	Appointment of Peon/Ayya (Yes/No)	YES	Ceiling fans available in each classroom(Yes/NO)	YES							
Provision of Fitst Aid Kit	YES	Any other infrastrucure Development	NO	Repair roof/replace (Yes/No)	NO	Plantation performed (Yes/No)	In progress							
Teachers Qualification	Matric	Intermediate	Bachelor	Masters	Mphil	Total Teachers	Student Teacer Ratio							
Breakup			2			2	1;22							
	N	P	One	Two	Three	Four	Five	Six	Seven	Eight	Nine	Ten	Total	Enrollment at the time of School handed over
Class wise Enrollment	22		4	4	3	4	6	1					44	53



GGPS BHUK

Mandi Bahao Din

AFTER



پنجاب ایجوکیشن فاؤنڈیشن
(حکومت پنجاب)

گورنمنٹ گرلز پرائمری سکول بھیک شریف
34630348

سکول ہذا کو PEF-PSRP کی مالی معاونت حاصل ہے۔ فاؤنڈیشن اس ادارہ میں زیر تعلیم تمام طلباء و طالبات کیلئے معیاری تعلیم مفت فراہم کر رہی ہے۔ لہذا اسکول انتظامیہ کسی بھی مد میں کوئی رقم یا فیس وصول نہیں کر سکتی۔

پتہ: پنجاب ایجوکیشن فاؤنڈیشن 152 میل بلاک گلبرگ-III لاہور برائے شکایات: 042-99230127, 042-99230113
برائے رابطہ: 042-99232791-8 ویب سائٹ: www.pef.edu.pk







GGPS MAILU KHONA

Mandi Bahao Din



PERFORMANCE REPORT OF PSRP SCHOOL (ORGANIZATIONS)

School Code	34620464		School Name	GGPS MAILU KHONA		District	MB DIN		GIS Coordinates					
School Address	GGPS MAILU KHONA				Organization Name	UNIQUE INTERNAIONAL EDUCATIONAL SERVICES PVT.LTD								
MINIMUM	12000				MAXIMUM SALARY	14000								
Availability of PEF Board as per Format (Yes/No)	YES	No of Functional Toilet	2	NO OF NON FUNCTIONAL TOILET	0	Student Toilet ratio	1:59							
Construction of new Toilets by licensee	NO	Availability of Electricity in School(Yes/No)	YES	Total Classrooms	5	Constructions of new class room by licensee (number)	NO							
Color coding as per PEF partners Guidelines (Yes/No)	YES	Paint work (Done/Not Done)	YES	Boundary wall Available (Yes/No)	YES	Boundary wall Constructed/repaired	NO							
Water Points available in school (Number)	2	Water Point ratio	1:59	Furniture for all studnets Available (Yes/No)	YES	Writing Board available in each class room (Yes/NO)	YES							
Mode of Transfer of Teachers' salary (digital/Cash)	DIGITAL	Salaries paid upto Month,2025	Feb-25	Appointment of Peon/Ayya (Yes/No)	YES	Ceiling fans available in each classroom(Yes/NO)	YES							
Provision of Fitst Aid Kit	YES	Any other infrastrucre Development	NO	Repair roof/replace (Yes/No)	NO	Plantation performed (Yes/No)	In progress							
Teachers Qualification	Matric	Intermediate	Bachelor	Masters	Mphil	Total Teachers	Student Teacer Ratio							
Breakup			2	1		3	1:39							
Class wise Enrollment	N	P	One	Two	Three	Four	Five	Six	Seven	Eight	Nine	Ten	Total	Enrollment at the time of School handed over
	55		22	20			7		2	11			117	61



GGPS MAILU KHONA Mandi Bahao Din

AFTER









GPS CHAKORI

Mandi Bahao Din



PERFORMANCE REPORT OF PSRP SCHOOL (ORGANIZATIONS)

School Code	34620215	School Name	GPS CHAKORI	District	MB DIN	GIS Coordinates	lat32.23444long73.4044444							
School Address	GPS CHAKORI			Organization Name	UNIQUE INTERNAIONAL EDUCATIONAL SERVICES PVT.LTD									
MINIMUM	12000			MAXIMUM SALARY	14000									
Availability of PEF Board as per Format (Yes/No)	YES	No of Functional Toilet	2	NO OF NON FUNCTIONAL TOILET	0	Student Toilet ratio	1:50							
Construction of new Toilets by licensee	NO	Availability of Electricity in School(Yes/No)	YES	Total Classrooms	3	Constructions of new class room by licensee (number)	NO							
Color coding as per PEF partners Guidelines (Yes/No)	YES	Paint work (Done/Not Done)	YES	Boundary wall Available (Yes/No)	YES	Boundary wall Constructed/repaired	NO							
Water Points available in school (Number)	2	Water Point ratio	1:50	Furniture for all studnets Available (Yes/No)	YES	Writing Board available in each class room (Yes/NO)	YES							
Mode of Transfer of Teachers' salary (digital/Cash)	DIGITAL	Salaries paid upto Month,2025	Feb-25	Appointment of Peon/Ayya (Yes/No)	YES	Ceiling fans available in each classroom(Yes/NO)	YES							
Provision of Fitst Aid Kit	YES	Any other infrastrucre Development	NO	Repair roof/replace (Yes/No)	NO	Plantation performed (Yes/No)	In progress							
Teachers Qualification	Matric	Intermediate	Bachelor	Masters	Mphil	Total Teachers	Student Teacer Ratio							
Breakup			3			3	1;33							
class wise enrollment	N	P	One	Two	Three	Four	Five	Six	Seven	Eight	Nine	Ten	Total	Enrollment at the time of School handed over
	44		10	10	8	15	10	1	2				100	59



GPS CHAKORI

Mandi Bahao Din

AFTER









GGPS NOOR PUR KATVI

Mandi Bahao Din



PERFORMANCE REPORT OF PSRP SCHOOL (ORGANIZATIONS)

School Code	34620369	School Name	GGPS NOOR PUR KATVI	District	MB DIN	GIS Coordinates	lat32.236666long73.3952777							
School Address	GGPS NOOR PUR KATVI			Organization Name	UNIQUE INTERNAIONAL EDUCATIONAL SERVICES PVT.LTD									
MINIMUM	12000			MAXIMUM SALARY	14000									
Availability of PEF Board as per Format (Yes/No)	YES	No of Functional Toilet	2	NO OF NON FUNCTIONAL TOILET	0	Student Toilet ratio	1:25							
Construction of new Toilets by licensee	NO	Availability of Electricity in School(Yes/No)	YES	Total Classrooms	2	Constructions of new class room by licensee (number)	NO							
Color coding as per PEF partners Guidelines (Yes/No)	YES	Paint work (Done/Not Done)	YES	Boundary wall Available (Yes/No)	YES	Boundary wall Constructed/repaired	NO							
Water Points available in school (Number)	1	Water Point ratio	1:49	Furniture for all studnets Available (Yes/No)	YES	Writing Board available in each class room (Yes/NO)	YES							
Mode of Transfer of Teachers' salary (digital/Cash)	DIGITAL	Salaries paid upto Month,2025	Feb-25	Appointment of Peon/Ayya (Yes/No)	YES	Ceiling fans available in each classroom(Yes/NO)	YES							
Provision of Fitst Aid Kit	YES	Any other infrastrucure Development	NO	Repair roof/replace (Yes/No)	NO	Plantation performed (Yes/No)	In progress							
Teachers Qualification	Matric	Intermediate	Bachelor	Masters	Mphil	Total Teachers	Student Teacer Ratio							
Breakup			2				2	1;25						
	N	P	One	Two	Three	Four	Five	Six	Seven	Eight	Nine	Ten	Total	Enrollment at the time of School handed over
Class wise Enrollment	23		8	4	3	8	3						49	53



GGPS NOOR PUR KATVI

Mandi Bahao Din

AFTER









GMPS LALY WALA

Mandi Bahao Din



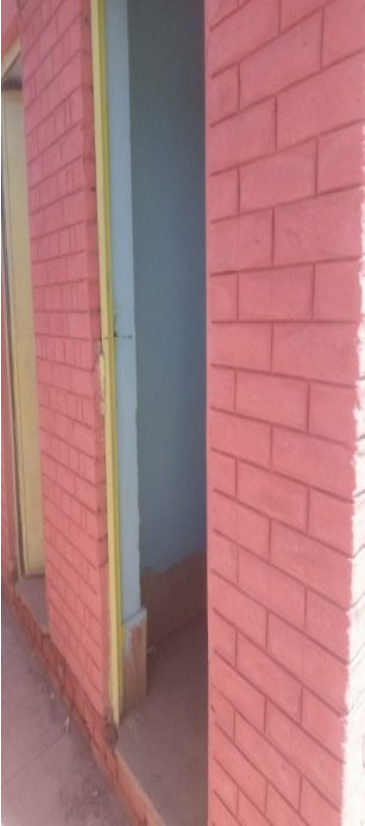
PERFORMANCE REPORT OF PSRP SCHOOL (ORGANIZATIONS)															
School Code	34620365			School Name	GMPS LALY WALA			District	MB DIN			GIS Coordinates			
School Address	GMPS LALY WALA			Organization Name	UNIQUE INTERNAIONAL EDUCATIONAL SERVICES PVT.LTD										
MINIMUM	12000			MAXIMUM SALARY	14000										
Availability of PEF Board as per Format (Yes/No)	YES	No of Functional Toilet	3	NO OF NON FUNCTIONAL TOILET	0	Student Toilet ratio	1:12								
Construction of new Toilets by licensee	NO	Availability of Electricity in School(Yes/No)	YES	Total Classrooms	5	Constructions of new class room by licensee (number)	NO								
Color coding as per PEF partners Guidelins (Yes/No)	YES	Paint work (Done/Not Done)	YES	Boundary wall Available (Yes/No)	YES	Boundary wall Constructed/repaired	NO								
Water Points available in school (Number)	1	Water Point ratio	1:35	Furniture for all studnets Available (Yes/No)	YES	Writing Board available in each class room (Yes/NO)	YES								
Mode of Transfer of Teachers' salary (digital/Cash)	DIGITAL		Salaries paid upto Month,2025	Feb-25	Appointment of Peon/Ayya (Yes/No)	YES	Ceiling fans available in each classroom(Yes/NO)	YES							
Provision of Fitst Aid Kit	YES	Any other infrastrucure Development	NO	Repair roof/replace (Yes/No)	NO	Plantation performed (Yes/No)	In progress								
Teachers Qualification	Matric	Intermediate	Bachelor	Masters	Mphil	Total Teachers	Student Teacer Ratio								
Breakup			2				2	1;18							
Class wise Enrollment	N	P	One	Two	Three	Four	Five	Six	Seven	Eight	Nine	Ten	Total	Enrollment at the time of School handed over	
	20		8	3	3		1						35	22	



GMPS LALY WALA

Mandi Bahao Din

AFTER





GMPS NAWAN LOKE

Mandi Bahao Din



PERFROMANCE REPORT OF PSRP SCHOOL (ORGANIZATIONS)														
School Code	34620090		School Name	GMPS NAWAN LOKE			District	MB DIN			GIS Coordinates	LAT32.281006LONG.73.39942		
School Address	GMPS NAWAN LOKE						Organization Name	UNIQUE INTERNAIONAL EDUCATIONAL SERVICES PVT.LTD						
MINIMUM	12000		MAXIMUM SALARY	15000										
Availability of PEF Board as per Format (Yes/No)	YES		No of Functional Toilet	2		NO OF NON FUNCTIONAL TOILET	0			Student Toilet ratio	1:53			
Construction of new Toilets by licensee	NO		Availability of Electricity in School(Yes/No)	YES		Total Classrooms	3			Constructions of new class room by licensee (number)	NO			
Color coding as per PEF partners Guidelines (Yes/No)	YES		Paint work (Done/Not Done)	YES		Boundary wall Available (Yes/No)	YES			Boundary wall Constructed/repaired	NO			
Water Points available in school (Number)	2		Water Point ratio	1:53		Furniture for all studnets Available (Yes/No)	YES			Writing Board available in each class room (Yes/NO)	YES			
Mode of Transfer of Teachers' salary (digital/Cash)	DIGITAL		Salaries paid upto Month,2025	Feb-25		Appointment of Peon/Ayya (Yes/No)	YES			Ceiling fans available in each classroom(Yes/NO)	YES			
Provision of Fitst Aid Kit	YES		Any other infrastrucre Development	NO		Repair roof/replace (Yes/No)	NO			Plantation performed (Yes/No)	In progress			
Teachers Qualification	Matric		Intermediate	Bachelor		Masters	Mphil			Total Teachers	Student Teacer Ratio			
Breakup				3		1				4	1;27			
Class wise Enrollment	N	P	One	Two	Three	Four	Five	Six	Seven	Eight	Nine	Ten	Total	Enrollment at the time of School handed over
	37		20	12	11	13	10	2	1				106	77



GMPS NAWAN LOKE Mandi Bahao Din

AFTER



پنجاب ایجوکیشن فاؤنڈیشن
پنجاب ایجوکیشن فاؤنڈیشن
(حکومت پنجاب)

گورنمنٹ گرلز پرائمری سکول نوان لوک
34620278

سکول ہذا کو PEF-PSRP کی مالی معاونت حاصل ہے۔ فاؤنڈیشن اس ادارہ میں زیر تعلیم تمام طلباء و طالبات کیلئے معیاری تعلیم مفت فراہم کر رہی ہے۔ لہذا اسکول انتظامیہ کسی بھی مد میں کوئی رقم یا فیس وصول نہیں کر سکتی۔

پتہ: پنجاب ایجوکیشن فاؤنڈیشن 152 ایل بلاک، گلبرگ۔ III لاہور برائے شکایات: 042-99230127, 042-99230113
ویب سائٹ: www.pef.edu.pk
042-99232791-8

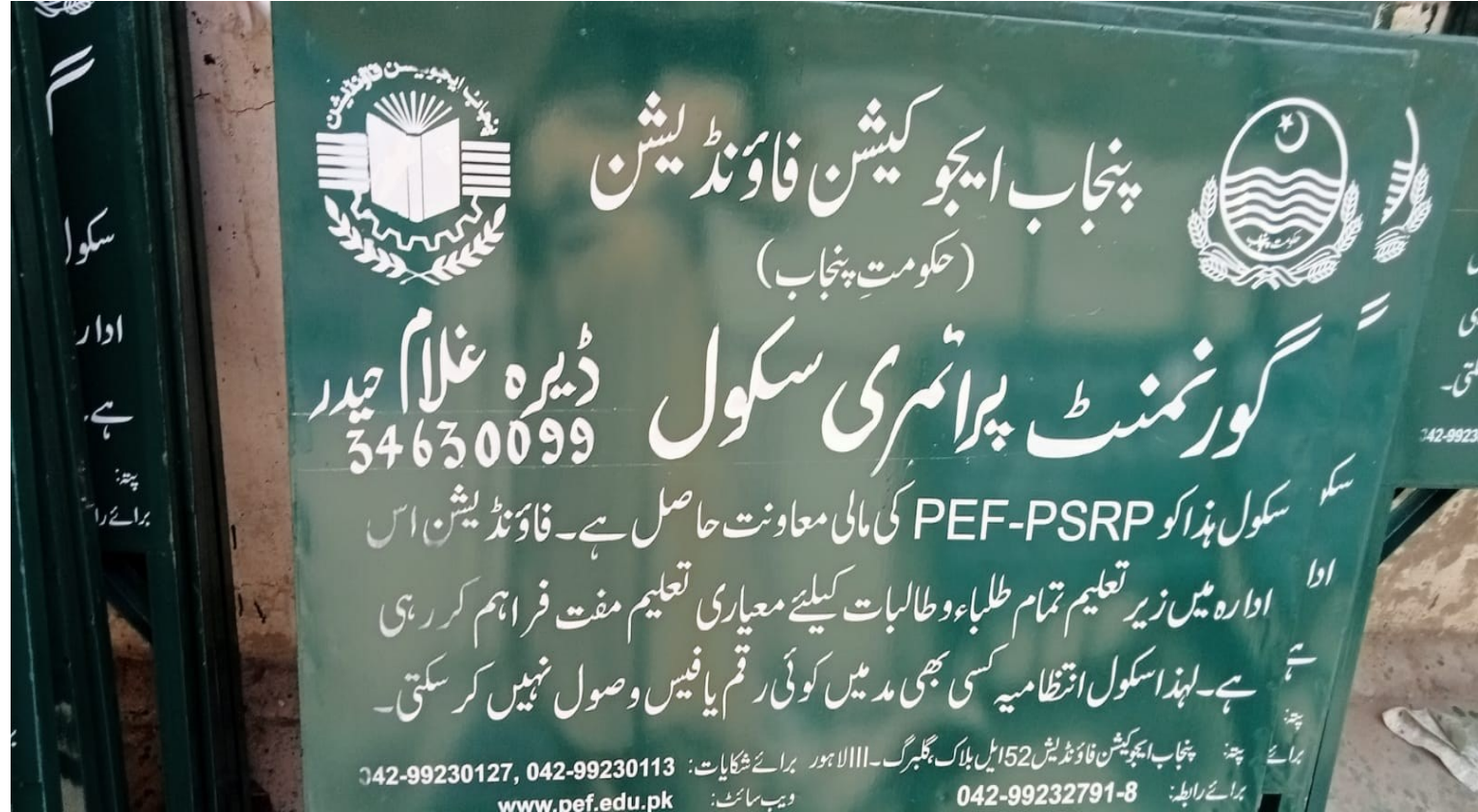




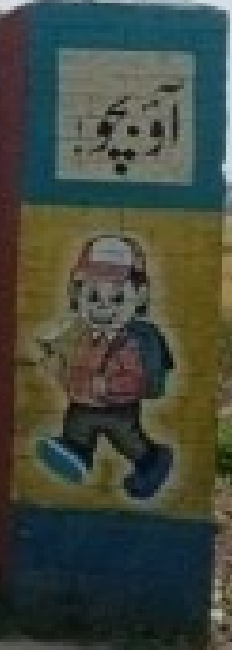
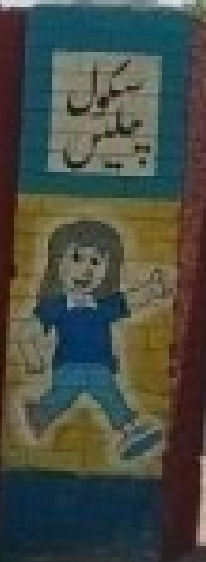


GPS DERA GHULAM HAIDER Mandi Bahao Din

AFTER

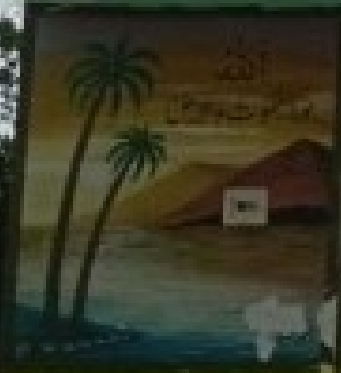


34630089
گورنمنٹ پرائمری سکول
ڈیڑہ غلام امین پور تحصیل بہاولپور
محکمہ تعلیم بہاولپور
0351-804375



لَا إِلَهَ إِلَّا اللَّهُ مُحَمَّدٌ رَسُوكَ اللَّهُ

قسمت نوع بشر تبدیل ہوتی ہے یہاں گورنمنٹ پرائمری سکول لاہور ضلع
اک مقدس فرائض کی تکمیل ہوتی ہے یہاں







GGPS CHAK NO 40 Mandi Bahao Din

AFTER









GGPS CHANI GHANA

Mandi Bahao Din



PERFORMANCE REPORT OF PSRP SCHOOL (ORGANIZATIONS)

School Code	34620329	School Name	GGPS CHANI GHANA	District	MB DIN	GIS Coordinates	lat32.34138888long73.41138888							
School Address	GGPS CHANI GHANA			Organization Name	UNIQUE INTERNAIONAL EDUCATIONAL SERVICES PVT.LTD									
MINIMUM	12000			MAXIMUM SALARY	14000									
Availability of PEF Board as per Format (Yes/No)	YES	No of Functional Toilet	2	NO OF NON FUNCTIONAL TOILET	0	Student Toilet ratio	1:30							
Construction of new Toilets by licensee	NO	Availability of Electricity in School(Yes/No)	YES	Total Classrooms	2	Constructions of new class room by licensee (number)	NO							
Color coding as per PEF partners Guidelines (Yes/No)	YES	Paint work (Done/Not Done)	YES	Boundary wall Available (Yes/No)	YES	Boundary wall Constructed/repaired	NO							
Water Points available in school (Number)	1	Water Point ratio	1:59	Furniture for all studnets Available (Yes/No)	YES	Writing Board available in each class room (Yes/NO)	YES							
Mode of Transfer of Teachers' salary (digital/Cash)	DIGITAL	Salaries paid upto Month,2025	Feb-25	Appointment of Peon/Ayya (Yes/No)	YES	Ceiling fans available in each classroom(Yes/NO)	YES							
Provision of Fitst Aid Kit	YES	Any other infrastrucre Development	NO	Repair roof/replace (Yes/No)	NO	Plantation performed (Yes/No)	In progress							
Teachers Qualification	Matric	Intermediate	Bachelor	Masters	Mphil	Total Teachers	Student Teacer Ratio							
Breakup			2			2	1;30							
Class wise Enrollment	N	P	One	Two	Three	Four	Five	Six	Seven	Eight	Nine	Ten	Total	Enrollment at the time of School handed over
	22		7	8	7	6	9						59	60



GGPS CHANI GHANA

Mandi Bahao Din

AFTER









GGPS KOT JALIAN

Mandi Bahao Din



PERFORMANCE REPORT OF PSRP SCHOOL (ORGANIZATIONS)

School Code	34620184		School Name	GGPS KOT JALIAN		District	MB DIN		GIS Coordinates	64333long73.5019444				
School Address	GGPS KOT JALIAN				Organization Name	UNIQUE INTERNAIONAL EDUCATIONAL SERVICES PVT.LTD								
MINIMUM	12000				MAXIMUM SALARY	15000								
Availability of PEF Board as per Format (Yes/No)	YES	No of Functional Toilet	2	NO OF NON FUNCTIONAL TOILET	0	Student Toilet ratio	1:20							
Construction of new Toilets by licensee	NO	Availability of Electricity in School(Yes/No)	YES	Total Classrooms	2	Constructions of new class room by licensee (number)	NO							
Color coding as per PEF partners Guidelines (Yes/No)	YES	Paint work (Done/Not Done)	YES	Boundary wall Available (Yes/No)	YES	Boundary wall Constructed/repaired	NO							
Water Points available in school (Number)	1	Water Point ratio	1:40	Furniture for all studnets Available (Yes/No)	YES	Writing Board available in each class room (Yes/NO)	YES							
Mode of Transfer of Teachers' salary (digital/Cash)	DIGITAL	Salaries paid upto Month,2025	Feb-25	Appointment of Peon/Ayya (Yes/No)	YES	Ceiling fans available in each classroom(Yes/NO)	YES							
Provision of Fitst Aid Kit	YES	Any other infrastrucure Development	NO	Repair roof/replace (Yes/No)	NO	Plantation performed (Yes/No)	In progress							
Teachers Qualification	Matric	Intermediate	Bachelor	Masters	Mphil	Total Teachers	Student Teacer Ratio							
Breakup			2			2	1;20							
Class wise Enrollment	N	P	One	Two	Three	Four	Five	Six	Seven	Eight	Nine	Ten	Total	Enrollment at the time of School handed over
	14		6	8	4	5	3						40	34



GGPS KOT JALIAN

Mandi Bahao Din

AFTER







GGPS DERA TAJA

Mandi Bahao Din



PERFROMANCE REPORT OF PSRP SCHOOL (ORGANIZATIONS)

School Code	34620239	School Name	GGPS DERA TAJA	District	MB DIN	GIS Coordinates	lat32.4297222long73.55527777							
School Address	GGPS DERA TAJA			Organization Name	UNIQUE INTERNAIONAL EDUCATIONAL SERVICES PVT.LTD									
MINIMUM	12000			MAXIMUM SALARY	14000									
Availability of PEF Board as per Format (Yes/No)	YES	No of Functional Toilet	3	NO OF NON FUNCTIONAL TOILET	0	Student Toilet ratio	1:23							
Construction of new Toilets by licensee	NO	Availability of Electricity in School(Yes/No)	YES	Total Classrooms	4	Constructions of new class room by licensee (number)	NO							
Color coding as per PEF partners Guidelines (Yes/No)	YES	Paint work (Done/Not Done)	YES	Boundary wall Available (Yes/No)	YES	Boundary wall Constructed/repaired	NO							
Water Points available in school (Number)	2	Water Point ratio	1:30	Furniture for all studnets Available (Yes/No)	YES	Writing Board available in each class room (Yes/NO)	YES							
Mode of Transfer of Teachers' salary (digital/Cash)	DIGITAL	Salaries paid upto Month,2025	Feb-25	Appointment of Peon/Ayya (Yes/No)	YES	Ceiling fans available in each classroom(Yes/NO)	YES							
Provision of Fitst Aid Kit	YES	Any other infrastrucure Development	NO	Repair roof/replace (Yes/No)	NO	Plantation performed (Yes/No)	In progress							
Teachers Qualification	Matric	Intermediate	Bachelor	Masters	Mphil	Total Teachers	Student Teacer Ratio							
Breakup		1	2			3	1;23							
	N	P	One	Two	Three	Four	Five	Six	Seven	Eight	Nine	Ten	Total	Enrollment at the time of School handed over
Class wise Enrollment	14		14	11	8	8	7	1	6				69	43



GGPS DERA TAJA Mandi Bahao Din

AFTER



پاکستان زندہ یاد







GPS DERA HAJI SARDAR KHAN Mandi Bahao Din

AFTER





IMPACT & CHANGE

Infrastructure Enhancement:

Investing in infrastructure development, Improvising of existing infrastructure, Construction and maintenance of Bath Rooms, Class Rooms, Labs, Play Grounds, Boundary Walls, Plantation & Eco-Living, ensuring availability of water and restoration of electricity & phones

Teacher Empowerment:

Recruitment and retention of quality teachers, Teacher training and professional development, Ensuring adequate availability of qualified teachers

Educational Resources:

Availability of textbooks and uniforms, Provision and maintenance of necessary teaching materials, Financial assistance for educational resources

Student Support:

Student-centric approach to learning, Support and counseling services for students, Incentives for regular attendance

Community Engagement:

Active involvement of the community in school activities, future planning through community input, School Councils and collaboration

Operational Maintenance:

Regular monitoring & evaluation of school performance, efficient maintenance of facilities and resources, continuous improvement in the quality of education





CONTACT US

Address: 19-E Main Boulevard,
Gulshan-e-Ravi, Lahore

Phone: +92 042 3741 9777

Mobile: +92 333 4571098

Email: info@uiesedu.com

Website: www.uiesedu.com

